

## **Great North Road Solar and Biodiversity Park**

Environmental Statement Volume 3, Chapter 2 Environmental Impact Assessment Figures

Document reference – EN010162/APP/6.3.2A

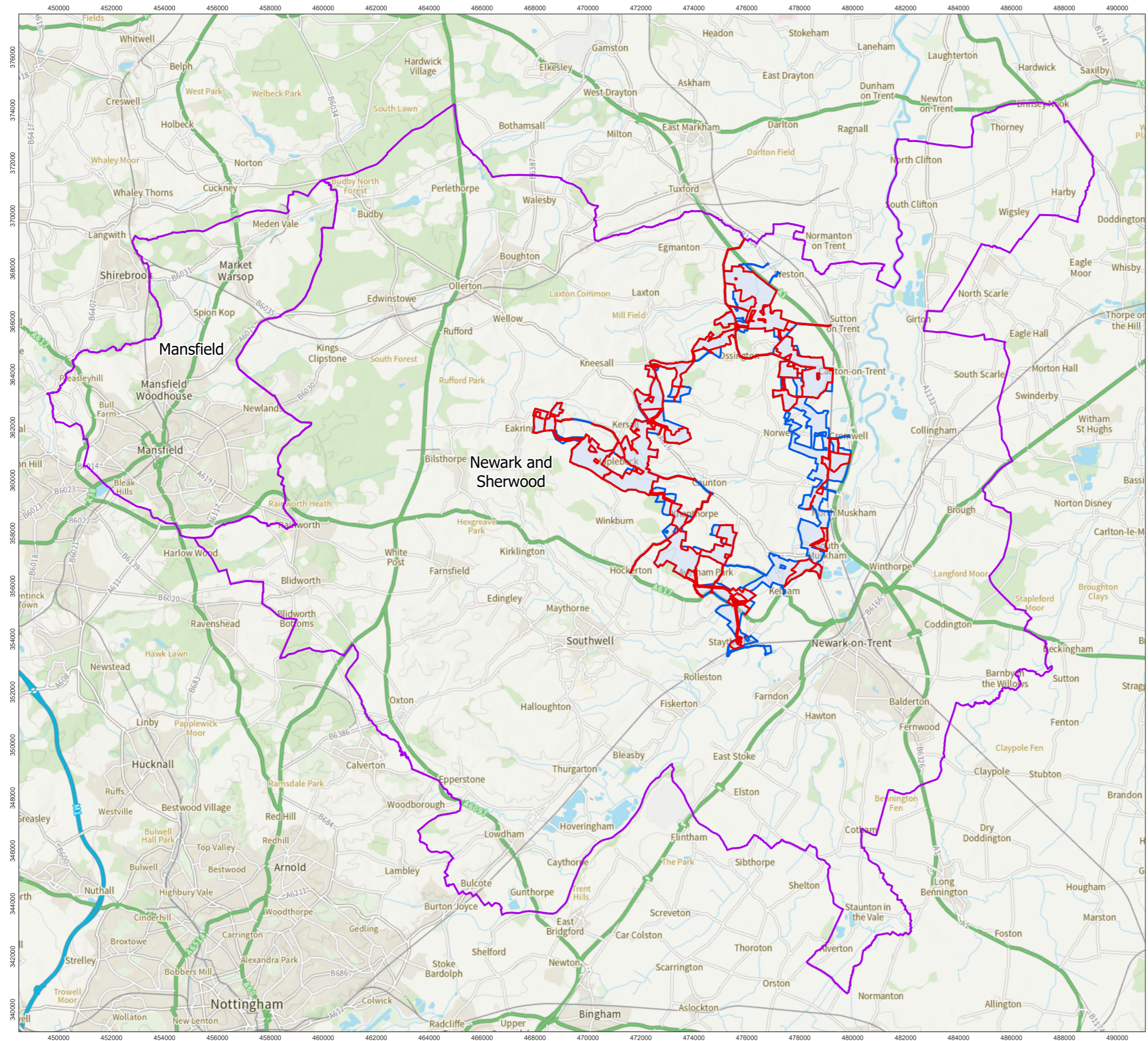
Revision number 2



August 2025

Infrastructure Planning (Applications: Prescribed Forms and Procedure) Regulations 2009, APFP Regulation 5(2)(a)

### 6.3.2 ENVIRONMENTAL STATEMENT VOLUME 3, CHAPTER 2 ENVIRONMENTAL IMPACT ASSESSMENT FIGURES

<i>Revision</i>	<i>Drawing Title</i>
01	Figure 2.1A Socio-Economic Zone of Influence
01	Figure 2.1B Other Zones of Influence



-  Cumulative Core Study Area
-  Local Planning Authority Boundary

1:140,000 Scale @ A3

0 1.25 2.5 5 km

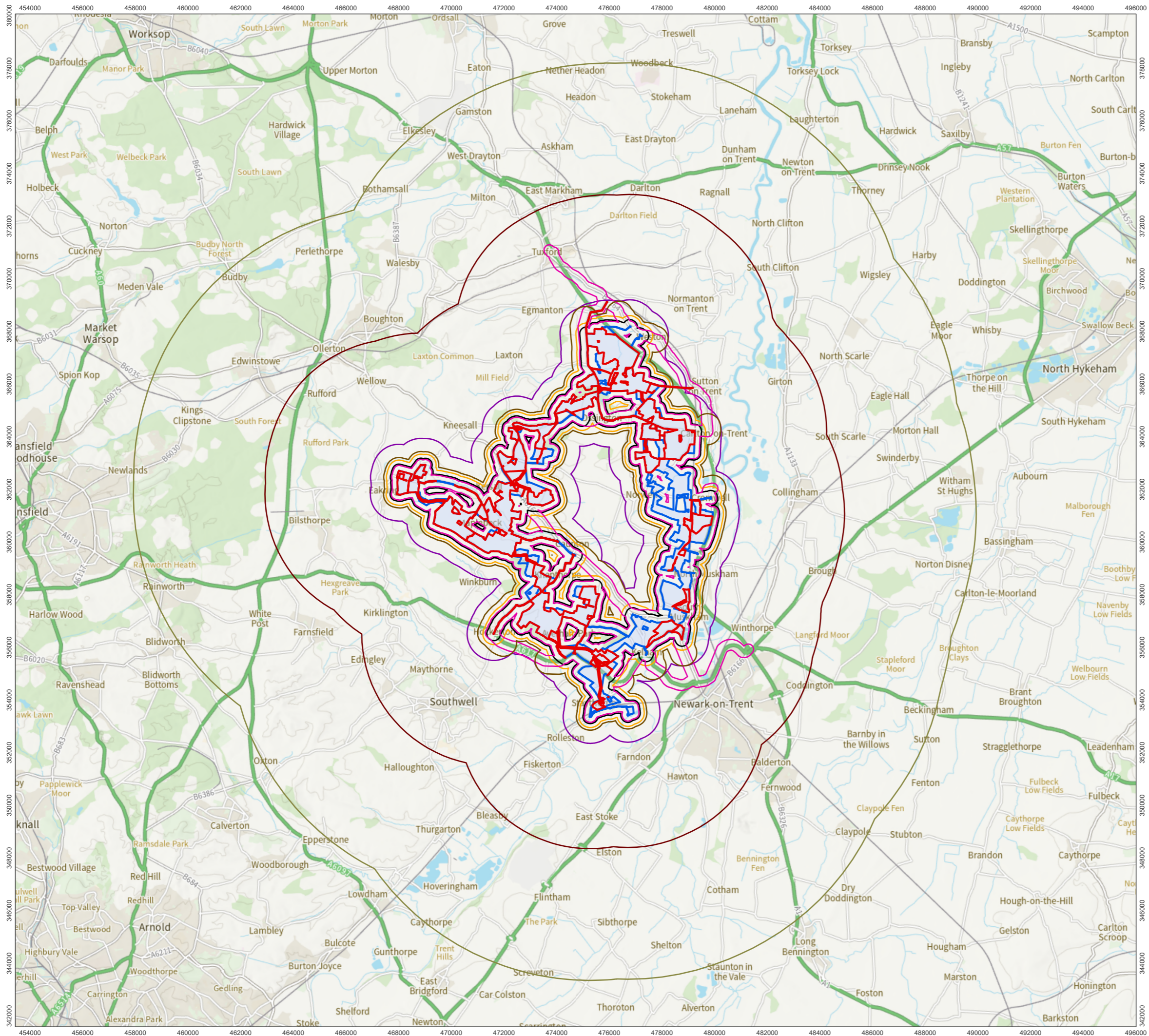


Ref: 026-ES-2.1A

Date: 26/06/2025

## Socio-Economic Zone of Influence Figure 2.1A

## Great North Road Solar and Biodiversity Park Environmental Statement



- Order Limits
- Cumulative Core Study Area
- Landscape, Ecology, Hydrology, and Heritage
  - 10 km Buffer of Cumulative Core Study Area
- Traffic and Transport and Recreation
  - 5 km Buffer of Cumulative Core Study Area
- Noise and Vibration
  - 1 km Buffer of Cumulative Core Study Area
- Dust
  - 700 m Buffer of Cumulative Core Study Area and 500 m Buffer of Construction Traffic Routes within 500 m of Cumulative Core Study Area
- Glint and Glare
  - 400 m Buffer of Cumulative Core Study Area
- Land Contamination
  - 250 m Buffer of Cumulative Core Study Area
- Air Quality
  - 200 m Buffer of Cumulative Core Study Area and Construction Traffic Routes

1:140,000 Scale @ A3

Ref: 026-ES-2.1B      Date: 20/06/2025

Other Zones of Influence  
Figure 2.1B

Great North Road Solar and Biodiversity Park  
Environmental Statement